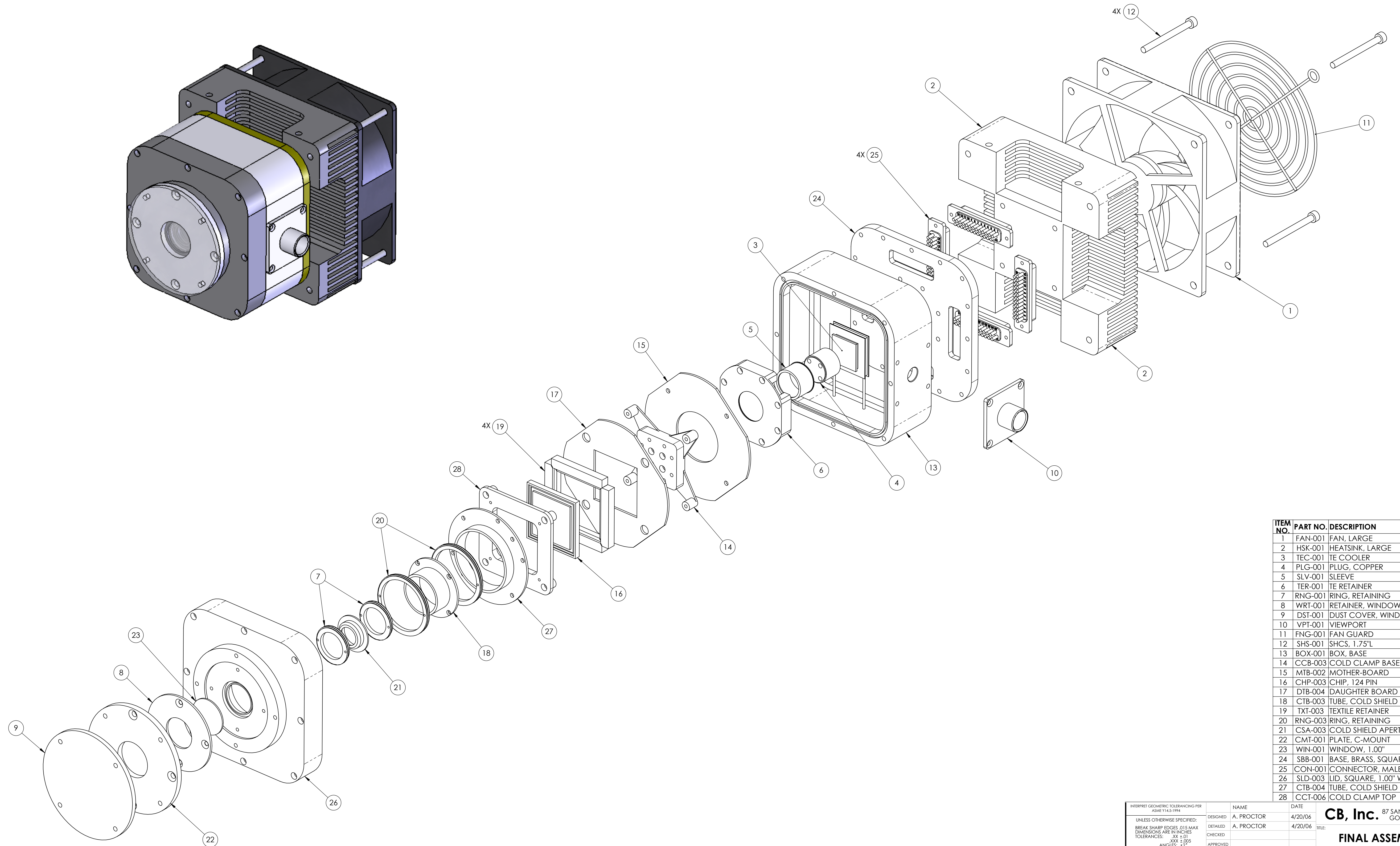


REVISION HISTORY		DATE	APPR.
REV	DESCRIPTION		
A	INITIAL RELEASE	4/20/06	AP
B	ITEM 28, CCT-006 WAS CCT-003.	6/08/06	AP



ITEM NO.	PART NO.	DESCRIPTION	QTY.
1	FAN-001	FAN, LARGE	1
2	HSK-001	HEATSINK, LARGE	1
3	TEC-001	TE COOLER	1
4	PLG-001	PLUG, COPPER	1
5	SLV-001	SLEEVE	1
6	TER-001	TE RETAINER	1
7	RNG-001	RING, RETAINING	2
8	WRT-001	RETAINER, WINDOW	1
9	DST-001	DUST COVER, WINDOW	1
10	VPT-001	VIEWPORT	1
11	FNG-001	FAN GUARD	1
12	SHS-001	SHCS, 1.75"L	4
13	BOX-001	BOX, BASE	1
14	CCB-003	COLD CLAMP BASE, 124 PIN	1
15	MTB-002	MOTHER-BOARD	1
16	CHP-003	CHIP, 124 PIN	1
17	DTB-004	DAUGHTER BOARD	1
18	CTB-003	TUBE, COLD SHIELD	1
19	TXT-003	TEXTILE RETAINER	4
20	RNG-003	RING, RETAINING	2
21	CSA-003	COLD SHIELD APERTURE	1
22	CMT-001	PLATE, C-MOUNT	1
23	WIN-001	WINDOW, 1.00"	1
24	SBB-001	BASE, BRASS, SQUARE	1
25	CON-001	CONNECTOR, MALE, 25 PIN	4
26	SLD-003	LID, SQUARE, 1.00" WINDOW	1
27	CTB-004	TUBE, COLD SHIELD	1
28	CCT-006	COLD CLAMP TOP	1

INTERPRET GEOMETRIC TOLERANCING PER ASME Y14.5-1994

UNLESS OTHERWISE SPECIFIED:
 BREAK SHARP EDGES, D15 MAX
 DIMENSIONS ARE IN INCHES
 TOLERANCES: .XX ±.01
 .XXX ±.005
 ANGLES: ±2°
 MACHINE SURFACE: 125

DESIGNED: A. PROCTOR 4/20/06
 DETAILED: A. PROCTOR 4/20/06
 CHECKED: _____
 APPROVED: _____

NAME: _____ DATE: _____
 TITLE: _____

87 SANTA FELICIA DRIVE
CB, Inc. GOLETA, CA 93117

PROPRIETARY AND CONFIDENTIAL
 THE INFORMATION CONTAINED IN THIS DRAWING IS THE SOLE PROPERTY OF CB, INC. ANY REPRODUCTION IN PART OR AS A WHOLE WITHOUT THE WRITTEN PERMISSION OF CB, INC. IS PROHIBITED.

SEE PARTS LIST
 NONE
 .XX LBS
 CAD GENERATED DWG
 SCALE: 1:1 (DO NOT SCALE DRAWING)

SHEET 1 OF 1

REV: **B**
 D **CBI-002**