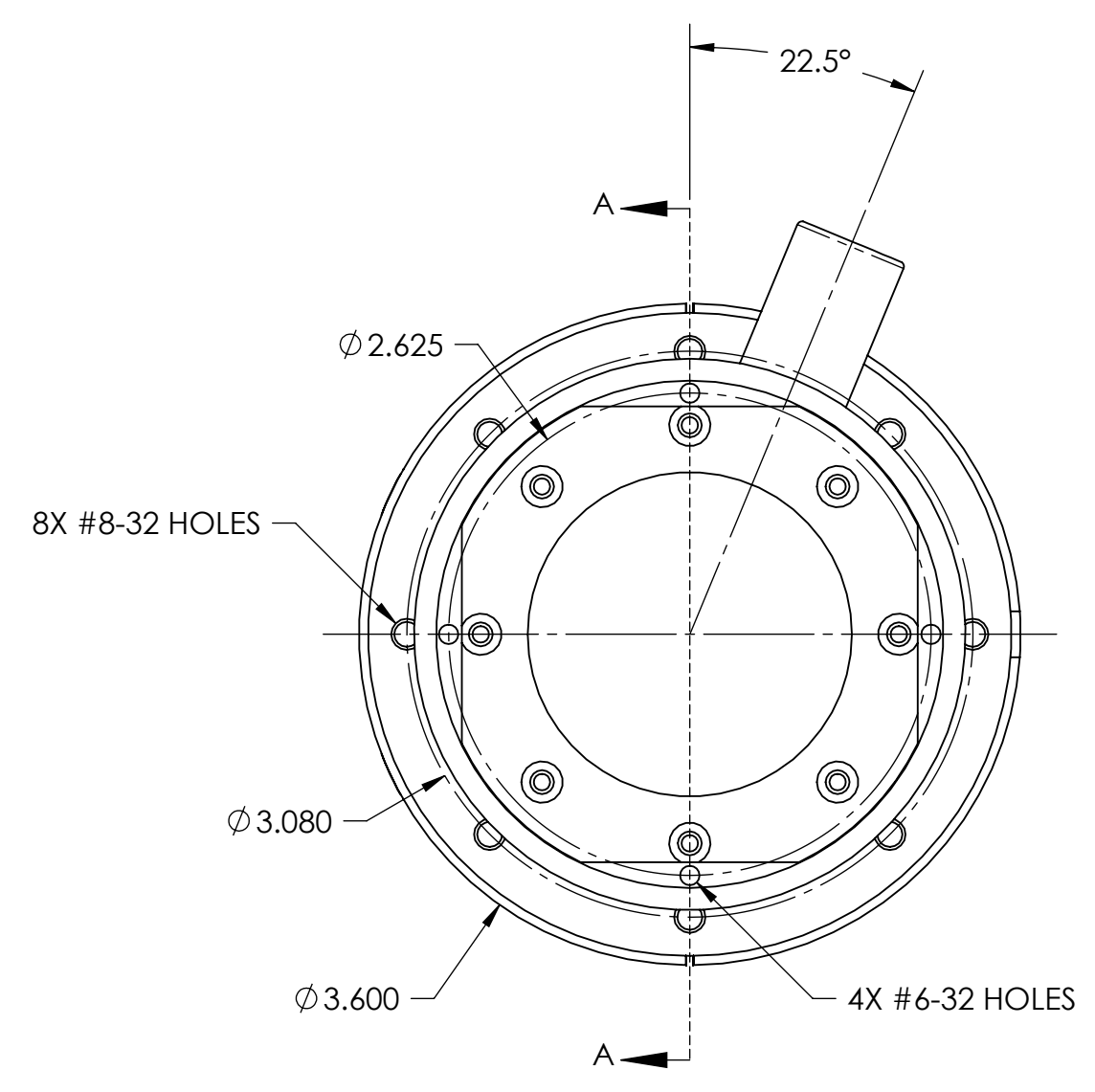
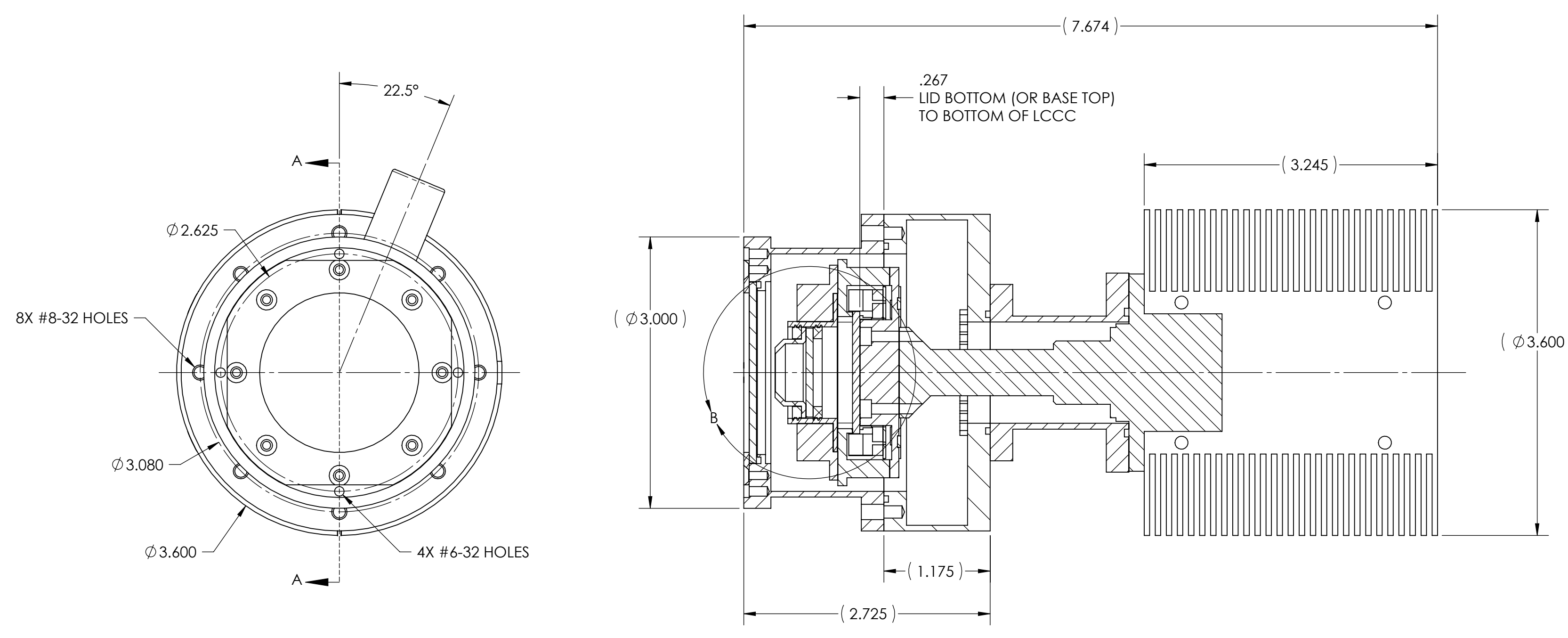
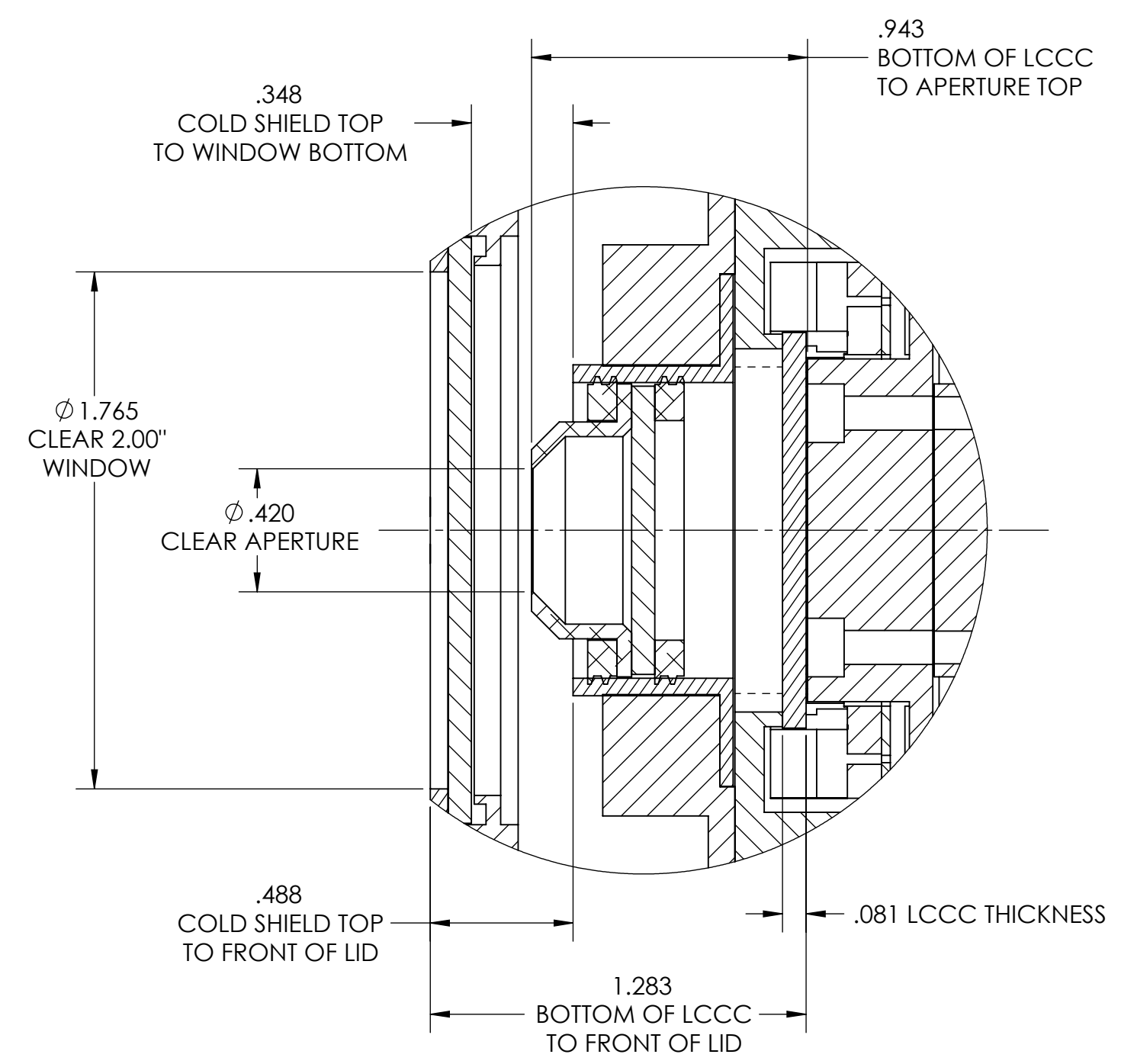


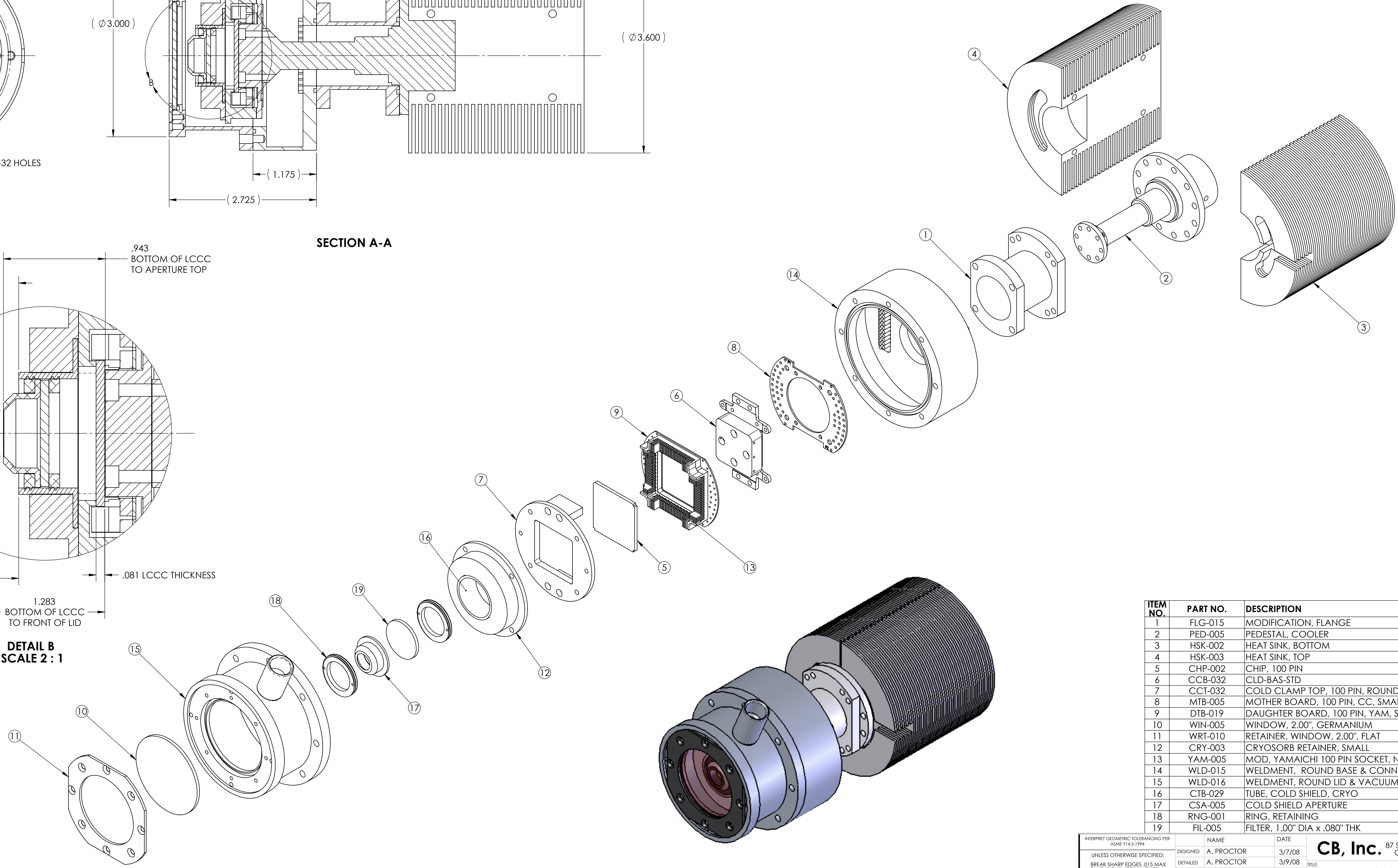
REVISION HISTORY		DATE	APPR.
REV	DESCRIPTION		
A	INITIAL RELEASE	3/9/08	



**SECTION A-A**



**DETAIL B  
SCALE 2 : 1**



ITEM NO.	PART NO.	DESCRIPTION	QTY.
1	FLG-015	MODIFICATION, FLANGE	1
2	PED-005	PEDESTAL, COOLER	1
3	HSK-002	HEAT SINK, BOTTOM	1
4	HSK-003	HEAT SINK, TOP	1
5	CHP-002	CHIP, 100 PIN	1
6	CCB-032	CLD-BAS-STD	1
7	CCT-032	COLD CLAMP TOP, 100 PIN, ROUND FLANGE	1
8	MTB-005	MOTHER BOARD, 100 PIN, CC, SMALL	1
9	DTB-019	DAUGHTER BOARD, 100 PIN, YAM, SMALL	1
10	WIN-005	WINDOW, 2.00", GERMANIUM	1
11	WRT-010	RETAINER, WINDOW, 2.00", FLAT	1
12	CRY-003	CRYOSORB RETAINER, SMALL	1
13	YAM-005	MOD, YAMAICHI 100 PIN SOCKET, NARROW	1
14	WLD-015	WELDMENT, ROUND BASE & CONNECTORS (2)	1
15	WLD-016	WELDMENT, ROUND LID & VACUUM PORT	1
16	CTB-029	TUBE, COLD SHIELD, CRYO	1
17	CSA-005	COLD SHIELD APERTURE	1
18	RNG-001	RING, RETAINING	2
19	FIL-005	FILTER, 1.00" DIA x .080" THK	1

INTERPRET GEOMETRIC TOLERANCING PER ASME Y14.5-1994  
 UNLESS OTHERWISE SPECIFIED:  
 BREAK SHARP EDGES, D15 MAX  
 DIMENSIONS ARE IN INCHES  
 TOLERANCES: .XX ±.01  
 .XXX ±.005  
 ANGLES: ±2°  
 MACHINE SURFACE: 125

**PROPRIETARY AND CONFIDENTIAL**  
 THE INFORMATION CONTAINED IN THIS DRAWING IS THE SOLE PROPERTY OF CB, INC. ANY REPRODUCTION IN WHOLE OR AS A WHOLE WITHOUT THE WRITTEN PERMISSION OF CB, INC. IS PROHIBITED.

DESIGNED	A. PROCTOR	DATE	3/7/08
DETAILED	A. PROCTOR	DATE	3/9/08
CHECKED			
APPROVED			

NAME: \_\_\_\_\_ DATE: \_\_\_\_\_  
 TITLE: \_\_\_\_\_  
 MATERIAL: SEE PARTS LIST  
 FINISH: NONE  
 ACT WT: .XX LBS CAD GENERATED DWG SCALE: NONE (DO NOT SCALE DRAWING) SHEET 1 OF 1

**CB, Inc.** 87 SANTA FELICIA DRIVE  
 GOLETA, CA 93117  
**DEWAR, CLOSED CYCLE,  
 100 PIN CHIP, SMALL**  
**D DWR-CC A**