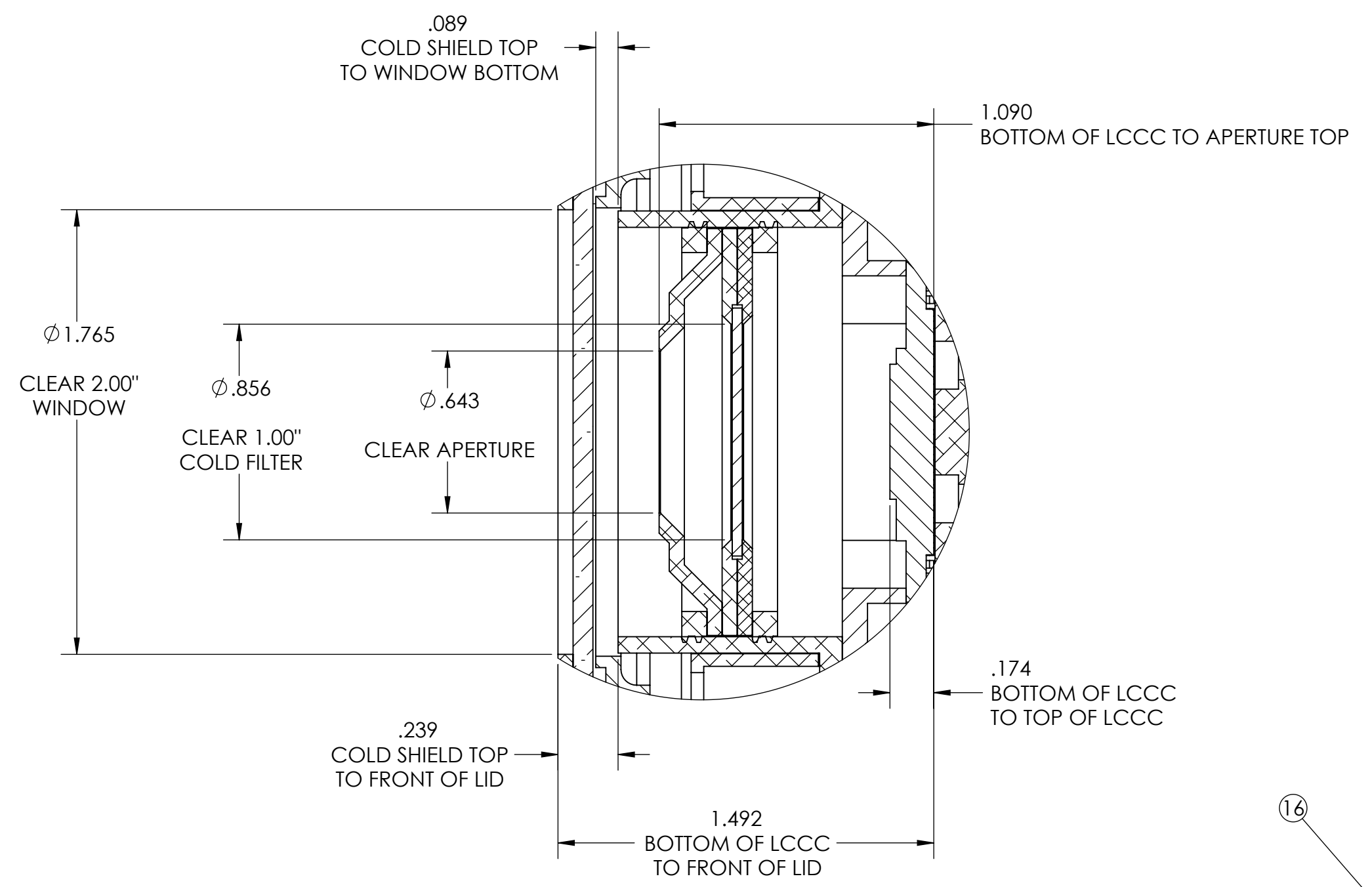
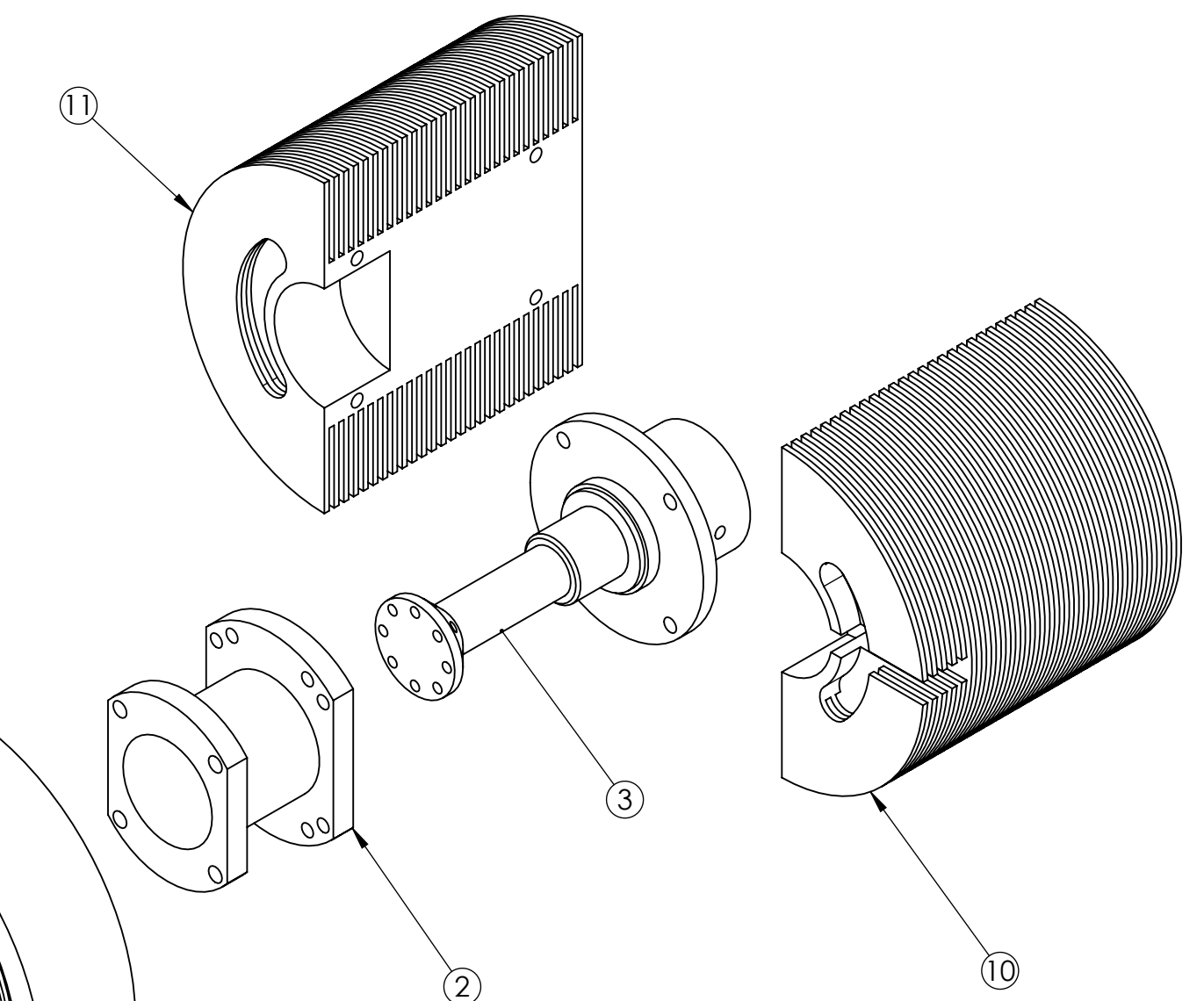
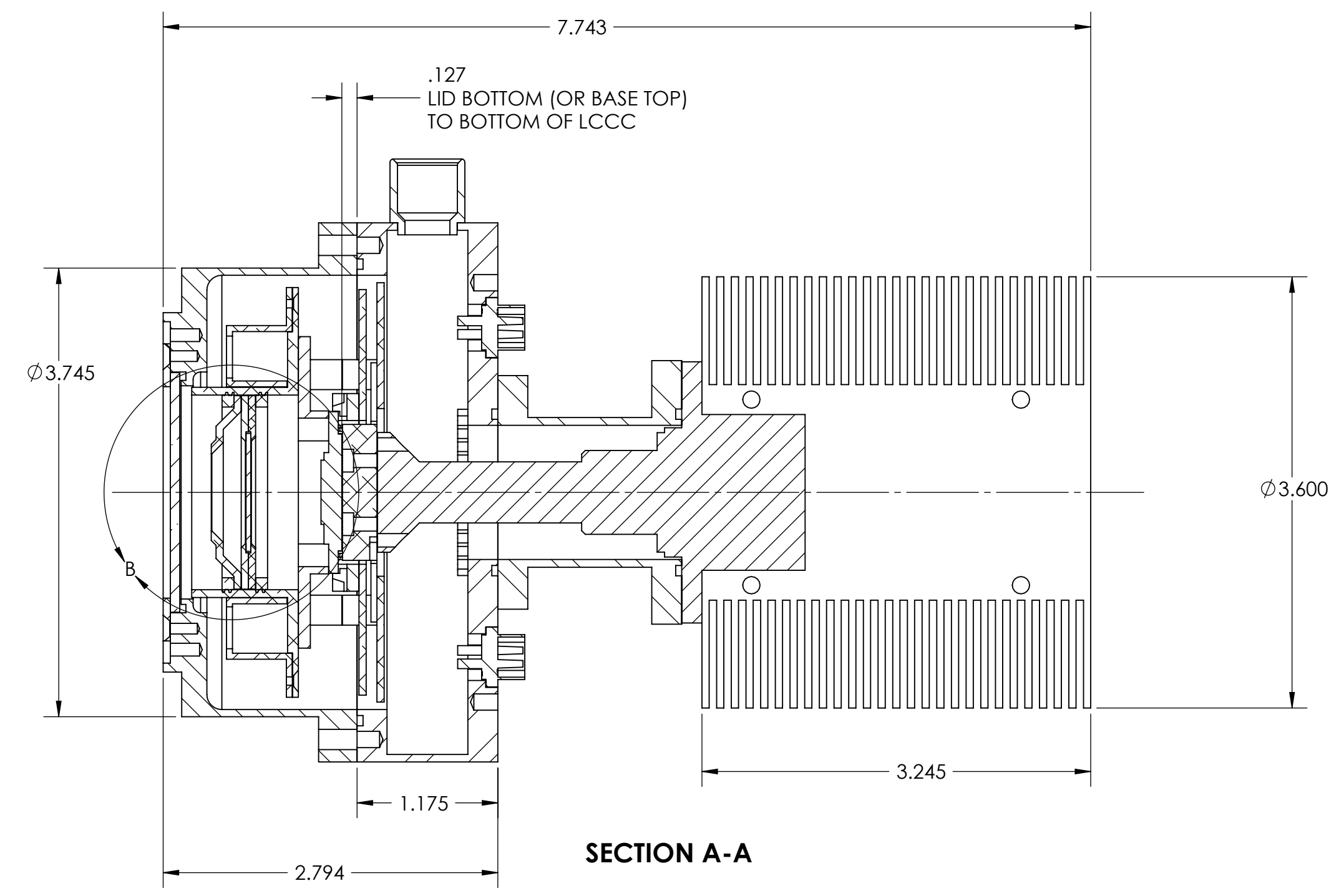
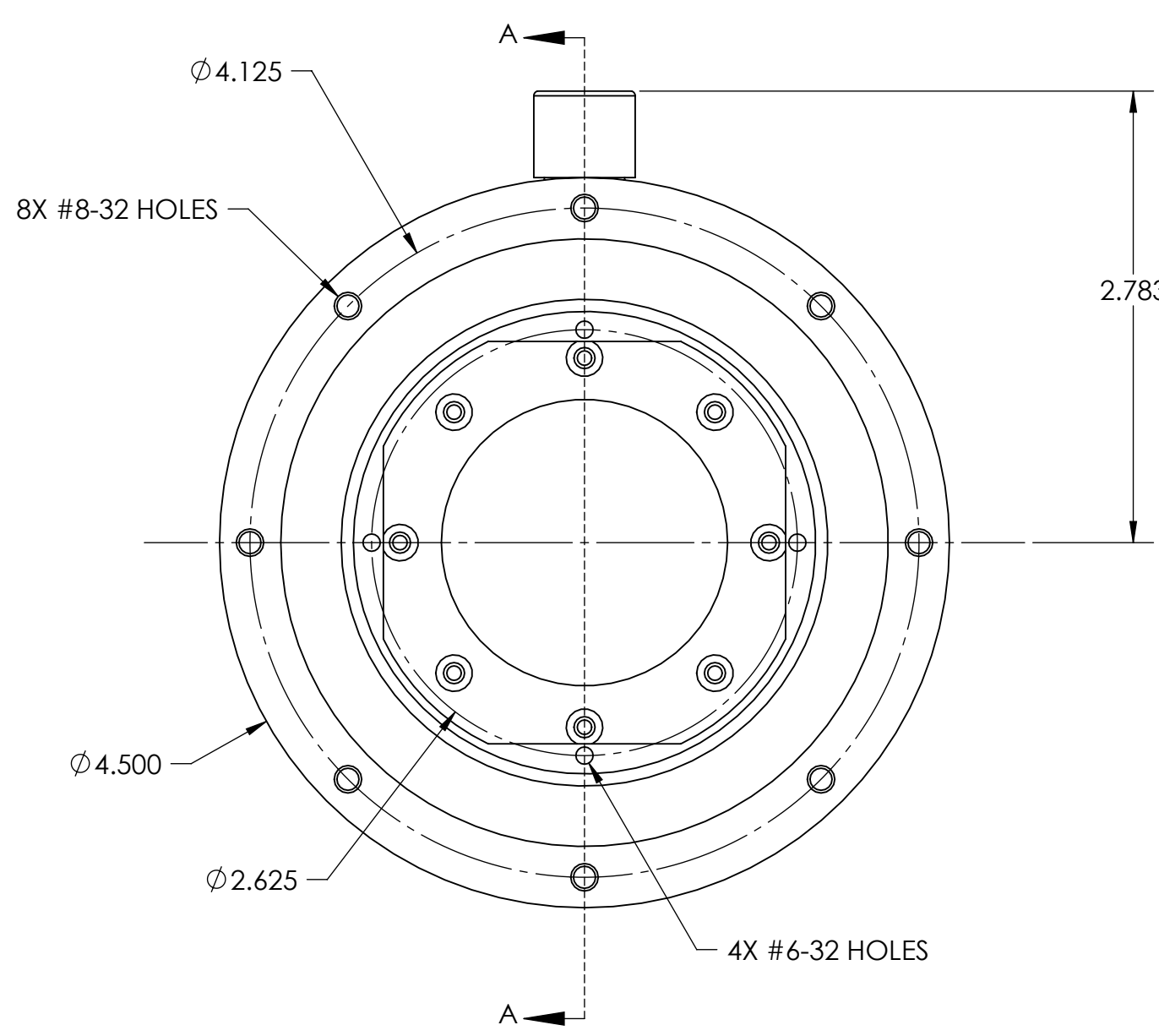
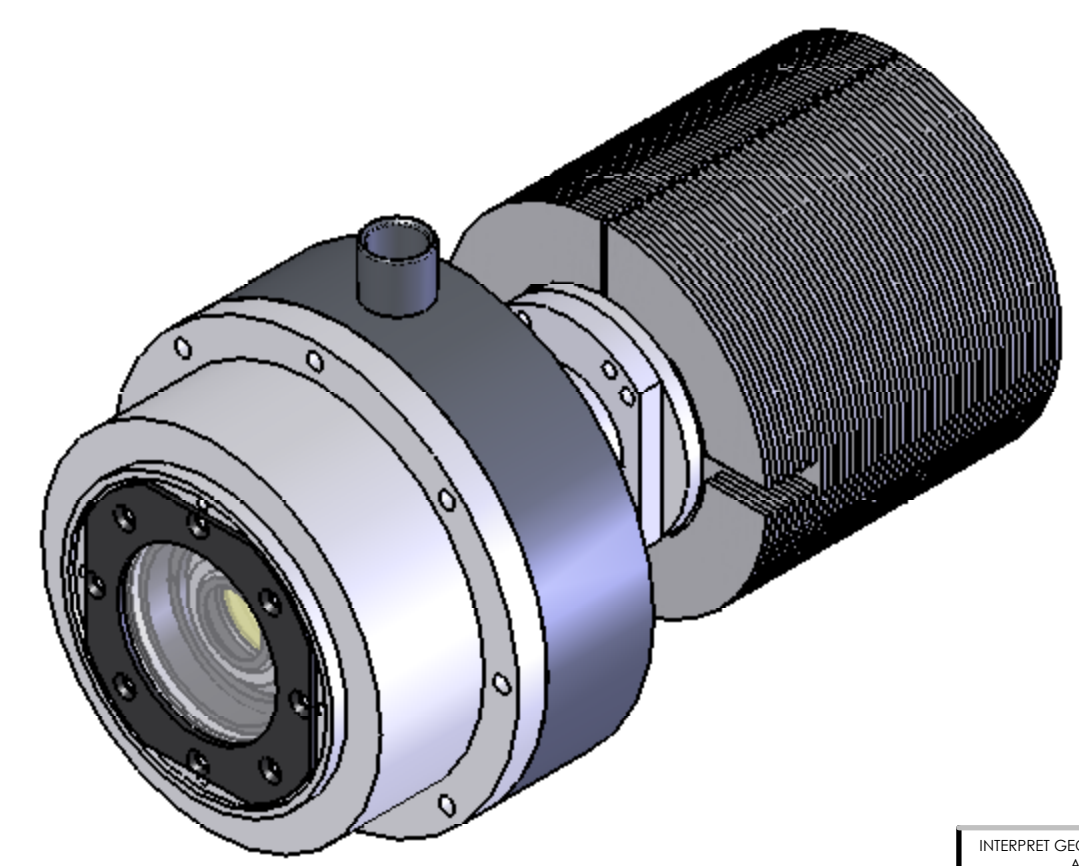
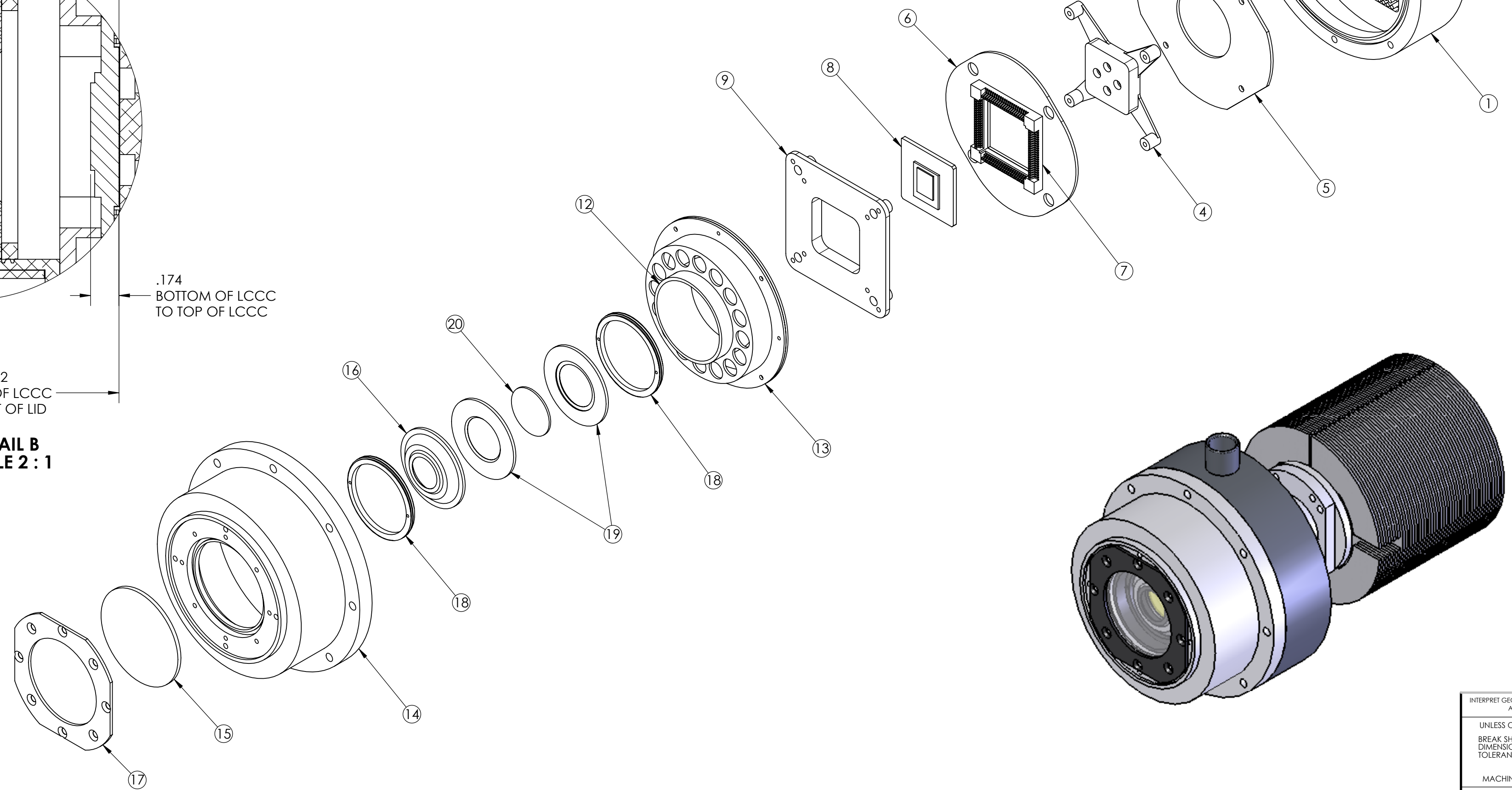


REVISION HISTORY		DATE	APPR.
REV	DESCRIPTION		
A	INITIAL RELEASE	12/22/06	AP
B	ADDED SECTION AND DETAIL VIEWS.	3/14/07	AP



DETAIL B
SCALE 2 : 1



ITEM NO.	PART NO.	DESCRIPTION	QTY.
1	WLD-007	WELDMENT, BASE & VACUUM PORT	1
2	FLG-015	FLANGE, ADAPTER, STANDARD	1
3	PED-005	PEDESTAL, COOLER	1
4	CCB-014	COLD CLAMP BASE, 100 PIN	1
5	MTB-002	MOTHER-BOARD	1
6	DTB-003	DAUGHTER BOARD	1
7	TXT-002	TEXTTOOL RETAINER	1
8	CHP-008	CHIP, 100 PIN	1
9	CCT-023	COLD CLAMP TOP, 100 PIN, MOD.	1
10	HSK-002	HEAT SINK, BOTTOM	1
11	HSK-003	HEAT SINK, TOP	1
12	CTB-021	COLD TUBE, CRYOSORB	1
13	CRY-009	CRYOSORB RETAINER	1
14	RLD-008	ROUND LID, MODIFIED	1
15	WIN-005	WINDOW, 2.00"	1
16	CSA-010	COLD SHIELD APERTURE, .628 I.D.	1
17	WRT-010	RETAINER, WINDOW, 2.00"	1
18	RNG-003	RING, RETAINING	2
19	BFL-010	BAFFLE	2
20	FIL-001	FILTER	1

INTERPRET GEOMETRIC TOLERANCING PER ASME Y14.5-1994

UNLESS OTHERWISE SPECIFIED:
 BREAK SHARP EDGES .015 MAX.
 DIMENSIONS ARE IN INCHES
 TOLERANCES: .XX ±.01
 .XXX ±.005
 ANGLES: 12°
 MACHINE SURFACE: 125

DESIGNED: A. PROCTOR DATE: 12/20/06
 DETAILED: A. PROCTOR DATE: 12/22/06
 CHECKED: A. PROCTOR DATE: 12/22/06
 APPROVED:

PROPRIETARY AND CONFIDENTIAL
 THE INFORMATION CONTAINED IN THIS DRAWING IS THE SOLE PROPERTY OF CB, INC. ANY REPRODUCTION IN PART OR AS A WHOLE WITHOUT THE WRITTEN PERMISSION OF CB, INC. IS PROHIBITED.

NAME: A. PROCTOR DATE: 12/20/06
 TITLE: DEWAR, CLOSED CYCLE, 100 PIN CHIP
 MATERIAL: SEE PARTS LIST
 FINISH: NONE
 ACT WT: .XX LBS CAD GENERATED DWG
 SCALE: NONE

CB, Inc. 87 SANTA FELICIA DRIVE GOLETA, CA 93117
 D CYC-001 B
 SHEET 1 OF 1