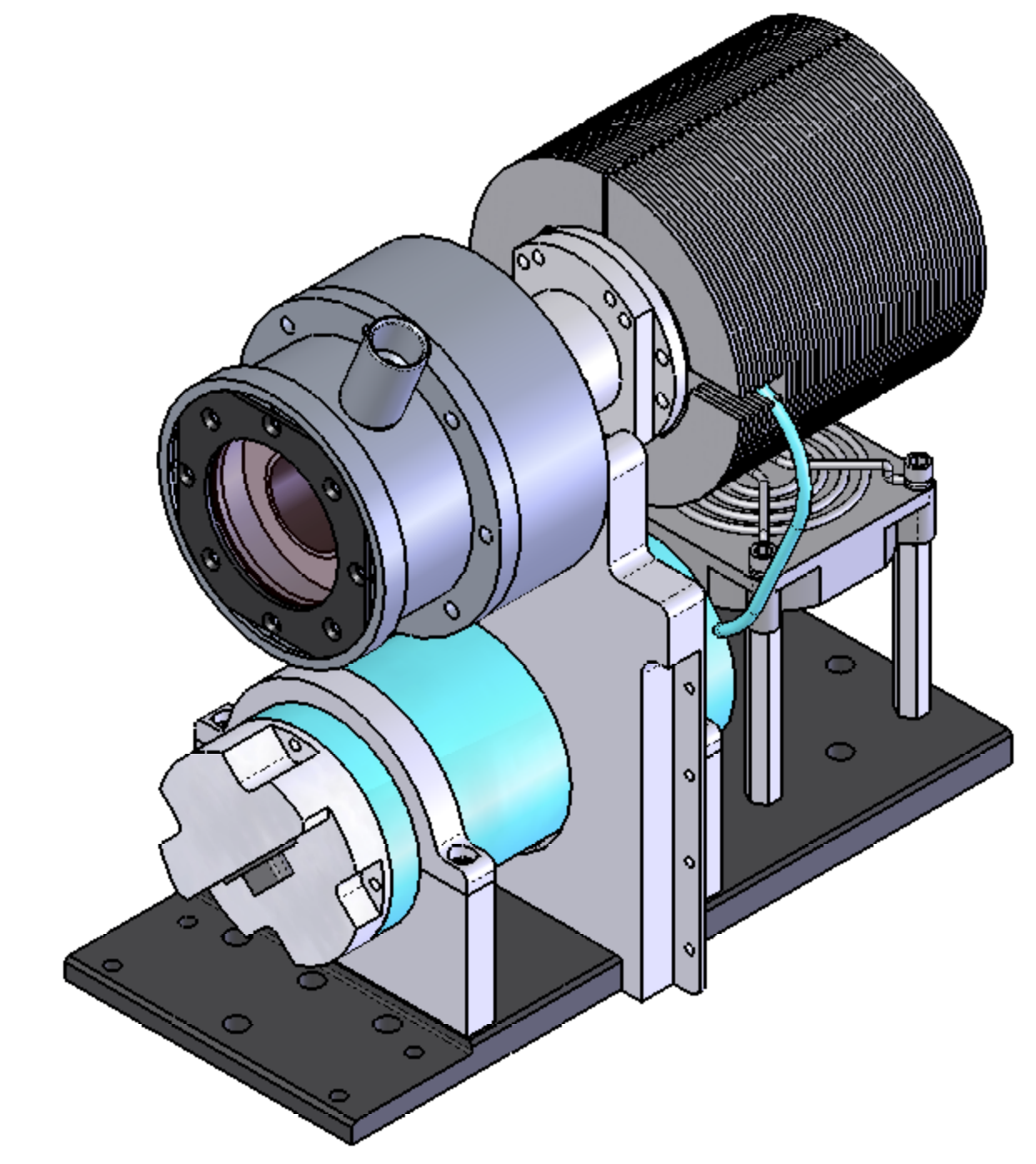
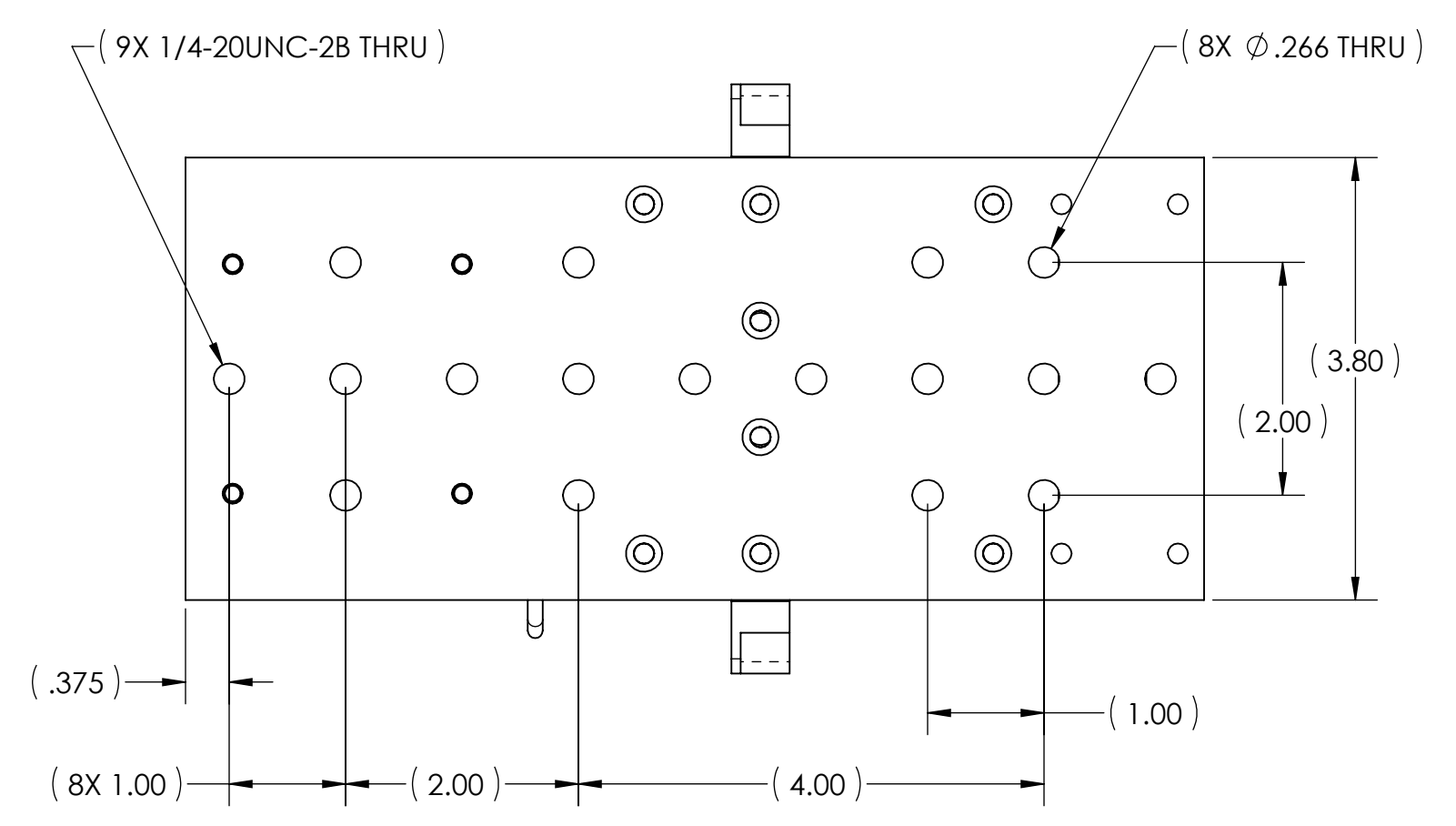
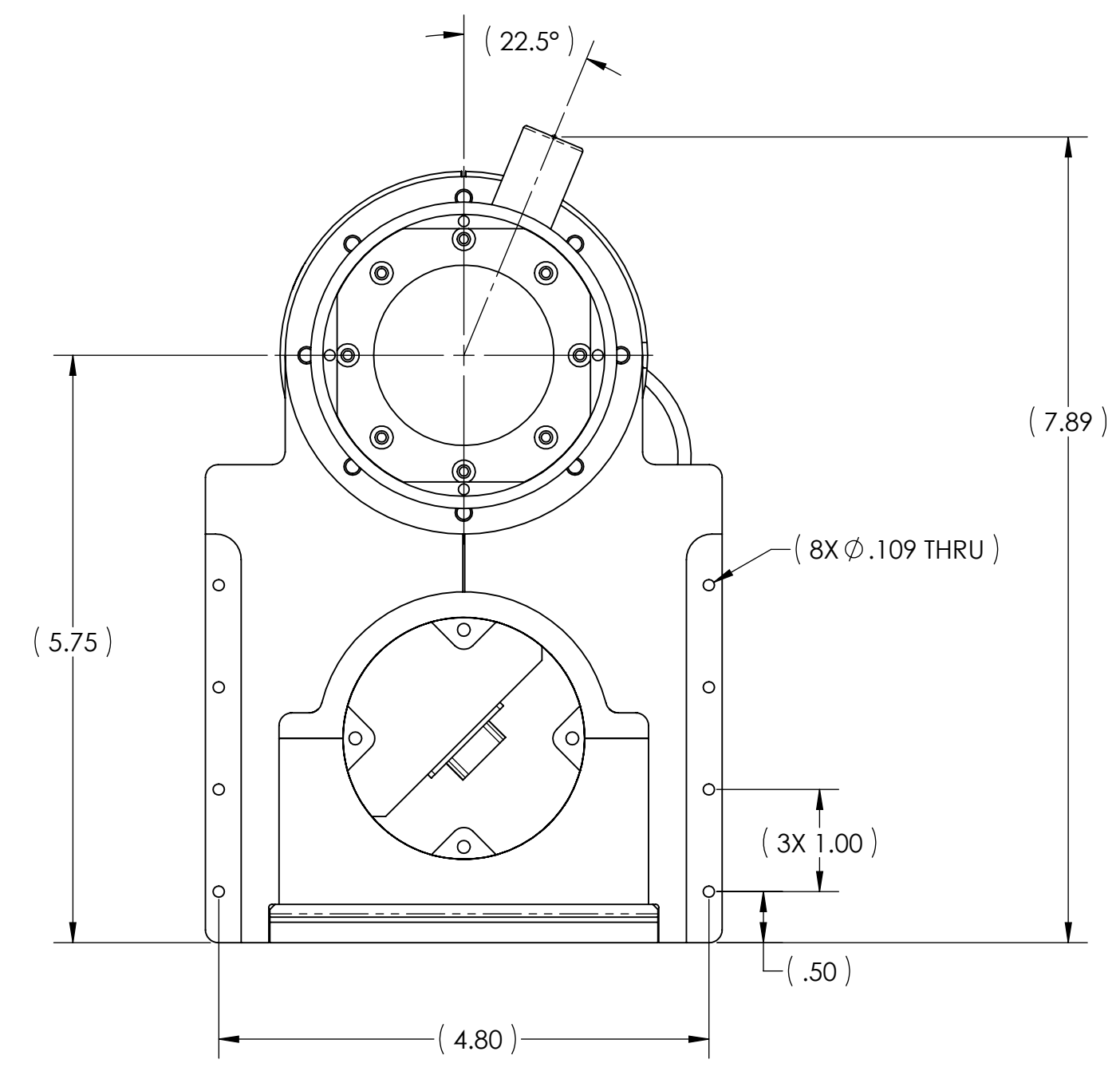
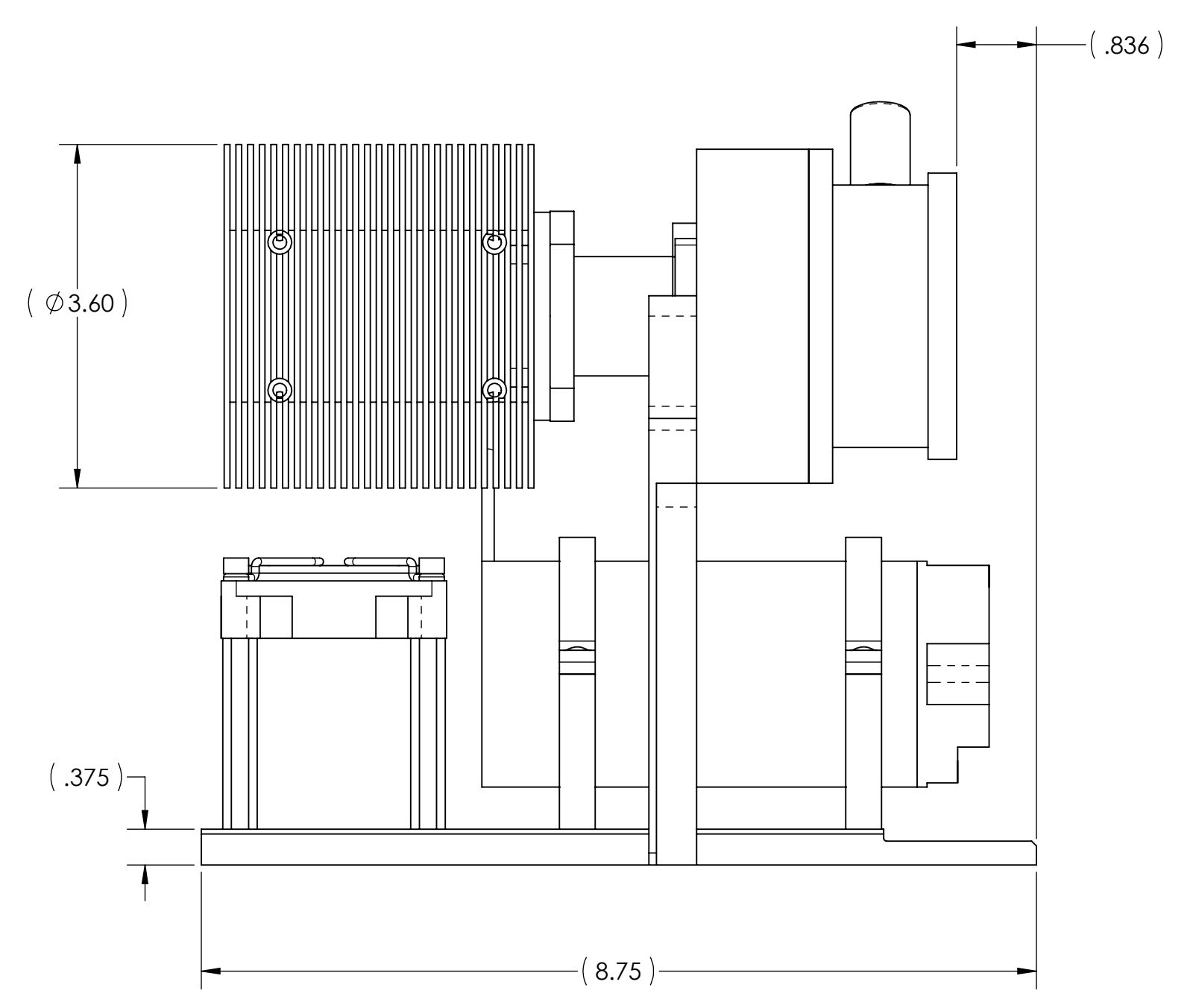
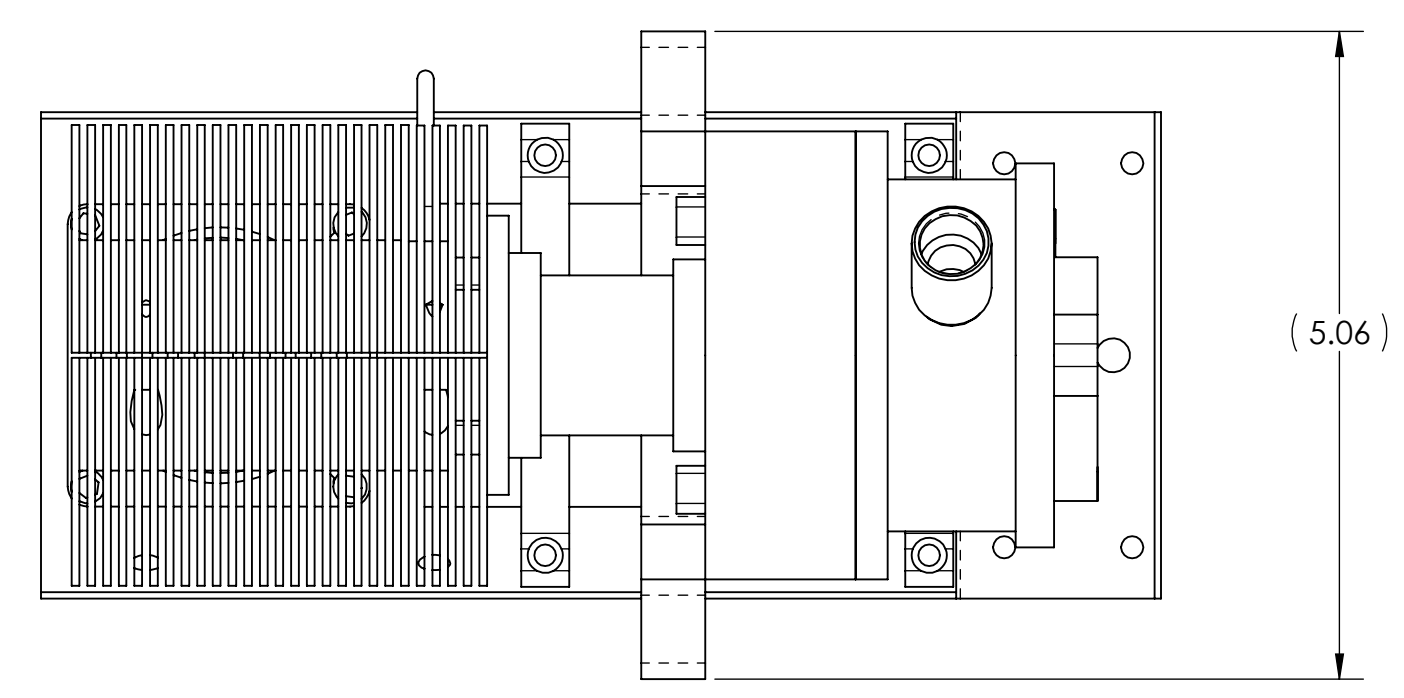


REVISION HISTORY		DATE	APPR.
REV	DESCRIPTION		
A	INITIAL RELEASE	3/9/08	



<small>INTERPRET GEOMETRIC TOLERANCING PER ASME Y14.5-1994</small> <small>UNLESS OTHERWISE SPECIFIED: BREAK SHARP EDGES .015 MAX DIMENSIONS ARE IN INCHES TOLERANCES: .XX ±.01 .XXX ±.005 ANGLES ±2° MACHINE SURFACE 125</small>	NAME	DATE	CB, Inc. 87 SANTA FELICIA DRIVE GOLETA, CA 93117 DEWAR, CLOSED CYCLE w/ 1.5W COOLER, SMALL DWR-CC-1.5W	REV.	
	DESIGNED	A. PROCTOR		3/7/08	A
	DETAILED	A. PROCTOR		3/9/08	
	CHECKED				
APPROVED					
<small>PROPRIETARY AND CONFIDENTIAL THE INFORMATION CONTAINED IN THIS DRAWING IS THE SOLE PROPERTY OF CB, INC. ANY REPRODUCTION IN PART OR AS A WHOLE WITHOUT THE WRITTEN PERMISSION OF CB, INC. IS PROHIBITED.</small>	MATERIAL:	VARIOUS	SIZE:	DWG NO.	
	FINISH:	VARIOUS			
	ACT WT:	.XX LBS	CAD GENERATED DWG	SCALE: NONE	
				SHEET 1 OF 1	